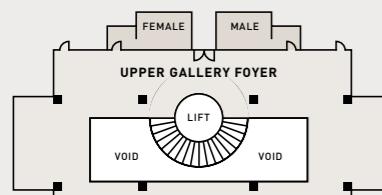
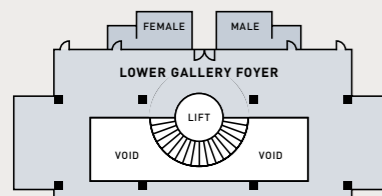


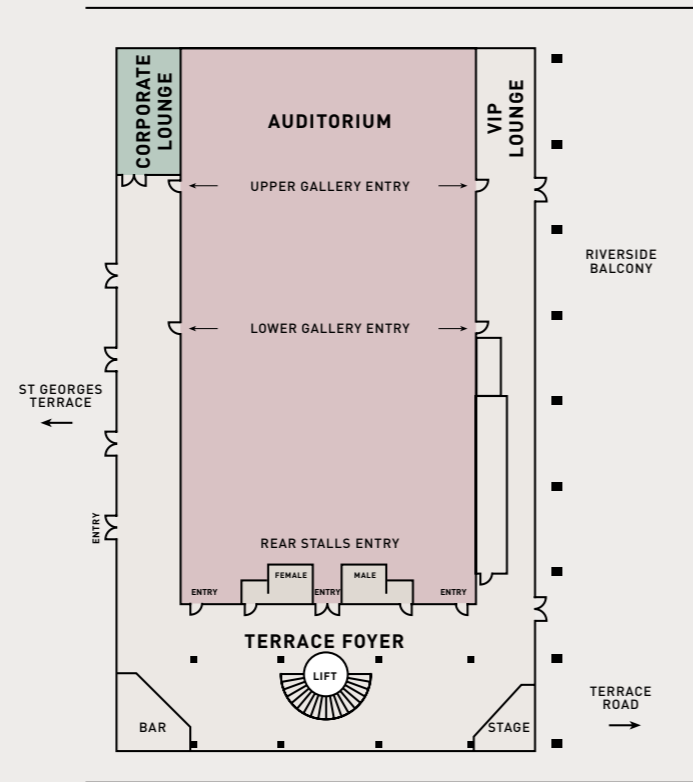
Upper Gallery Plan



Lower Gallery Plan

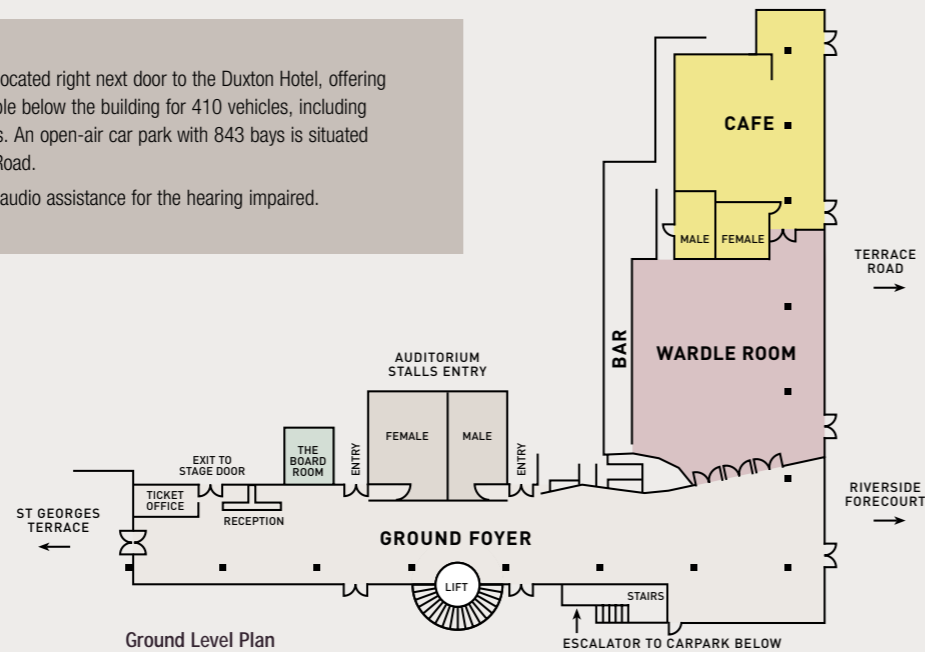


Terrace Level & Auditorium Plan



Perth Concert Hall is on the main Perth city bus route and located right next door to the Duxton Hotel, offering 306 rooms with luxury décor. Undercover parking is available below the building for 410 vehicles, including ACROD bays with easy lift access to the Concert Hall foyers. An open-air car park with 843 bays is situated behind the building. Entry to both car parks is via Terrace Road.

The theatre is equipped with wheelchair access and offers audio assistance for the hearing impaired.

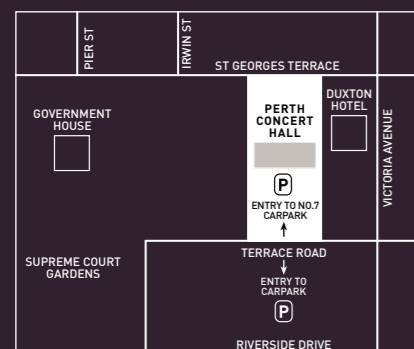


While the Perth Concert Hall has hosted traditional and contemporary artists since 1973 and is revered as the best fine music acoustics venue in Australia, it is becoming increasingly popular as a unique option for national conventions and exhibitions, award ceremonies and gala dinners.

This landmark building has an outstanding auditorium, surrounded by well-appointed foyers and galleries. These surrounding areas are suitable for trade displays, delegate luncheons, welcome cocktail receptions and informal workshops and offer an abundance of natural light with superb views over the Swan River. Several backstage areas are also available for use by entertainers, speakers, committees and media representatives.

The riverside balcony and terrace forecourts are a fresh alternative for outdoor events of varying sizes, often used as additional exhibition space and also to cater for much larger dinner dances of up to 700 guests in a marquee.

Perth Concert Hall's versatility, together with the Duxton Hotel located right next door, makes it an ideal corporate venue for large scale events.

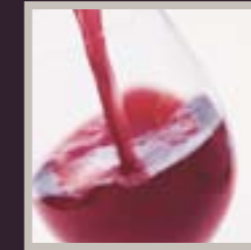


Perth Concert Hall  
 5 St Georges Terrace Perth, Western Australia.  
 All correspondence: PO Box Y3056 East St Georges Tce, Perth WA 6832.  
 Function enquiries: T 08 9231 9941 F 08 9221 0775.

[www.perthconcerthall.com.au](http://www.perthconcerthall.com.au)

A UNIQUE OPTION FOR CONVENTIONS, EXHIBITIONS,  
 AWARD CEREMONIES AND GALA DINNERS

LEAVE AS MUCH, OR AS LITTLE, OF YOUR EVENT NEEDS TO US – WE OFFER VENUE AREAS WITH A DIFFERENCE, COMPLEMENTED WITH A WEALTH OF EXPERIENCE, ATTENTION TO DETAIL AND INNOVATIVE IDEAS.



## PERTH CONCERT HALL

### Wardle Room

Whether you require a room to start the day with breakfast, or finish the day with dinner and dancing, our Sir Thomas Wardle Room is incredibly versatile, and lends itself to a variety of uses. Draw back the curtains, and let the sunshine pour in; close the curtains, and you have the most affordable presentation room in town.

### Terrace & Ground Floor Foyers

Perfect for registration, trade displays, welcome cocktail receptions and speaker lectures. Using both levels, the foyers can comfortably house an exhibition of 44 booths while also allowing enough floor space for catering service stations. As a bonus, both levels have floor to ceiling glass windows that provide natural light to every corner.

### VIP Lounge Area

Situated at the end of the south corridor foyer on the Terrace Level, the VIP Lounge area overlooks the riverside balcony and magnificent Swan River. This area is extremely versatile, more commonly used for informal meetings, workshops, poster displays and pre-show catering.

### Corporate Lounge

Situated at the end of the north corridor foyer on the Terrace Level, the Corporate Lounge has an abundance of natural light and is ideal as a small meeting room, breakout area, VIP cocktails area, committee or exhibitor lounge.

### The Boardroom

Whether used as a secretariat at a large convention or on its own as a small meeting room, The Boardroom is located right where you want it – on the ground foyer near the main entry. The Boardroom is easy to access, with its own kitchenette, TV monitor, VCR, DVD, ISDN lines and Internet access.

### Main Auditorium

Sophisticated and stylish, this outstanding auditorium can seat up to 1729 delegates divided into three main levels – Stalls, Lower Gallery and Upper Gallery. All seating is raked to optimise each delegate's view, suitable for vehicle launches, formal dinners, cocktail parties and special breakfasts.

### Main Stage

Let us create a world of mystery – the main stage within the auditorium can be impressively constructed into a 3-tiered gala ballroom to seat 300 guests. Our highly-skilled technical crew can help enhance your event with props, staging and special effects – from the glamour of Hollywood to somewhere from outer space (or anywhere in between), we'll tie in the perfect performer or act, and you have an unforgettable evening, sure to wow your guests.

CONCERT HALL	DIMENSION (M)	AREA (M <sup>2</sup> )	CEILING HEIGHT (M)	Theatre	Cocktail	Dinner	Exhibition	Boardroom
<b>AUDITORIUM</b>				1729	-	-	-	-
Main Stage	18.4 (DS) x 11.1	180	16.5	140	150	120	-	-
Main Stage Extension	3-tiers	300	varies	-	420	300	-	-
<b>TERRACE LEVEL</b>								
Terrace Foyer	u-shaped foyer	661	3.6 to 15	130	600	120	20 booths	36
Corporate Lounge	9.4 x 5.7	54	15	25	30	20	-	18
VIP Lounge			15	70	100	60	-	48
<b>GROUND LEVEL</b>								
Ground Foyer	60 x 8	510	2.6	-	300	-	12 booths	-
Wardle Room	15.8 x 16.2	260	2.6	330	350	150	13 booths	48
Café	17 x 11	150	2.6	-	100	30	-	-
The Boardroom	5.4 x 3.8	16.4	2.6	-	-	-	Secretariat	8
<b>OUTDOOR - MARQUEE</b>								
Riverside Balcony	60 x 10	600	4.25 (apex)	-	800	500	on request	-
Riverside Forecourt	55 x 20	1100	4.25 (apex)	-	1000	700	on request	-
Terrace Forecourt	35 x 25	875	6.8 (apex)	-	1200	730	on request	-
<b>LOWER GALLERY LEVEL</b>								
South Foyer	u-shaped foyer	120	3.6	35	50	40	-	12
North Foyer	u-shaped foyer	120	3.6	35	50	40	-	12
<b>UPPER GALLERY LEVEL</b>								
South Foyer	u-shaped foyer	120	3.6	35	50	40	-	12
North Foyer	u-shaped foyer	120	3.6	35	50	40	-	12

NB Dinner & Cocktail capacities will reduce where a dance floor is required.

Area (M<sup>2</sup>) indicates useable floor space.

'THE UNIQUE NATURE OF THE CONCERT HALL FOYERS MEANT THAT THE EXHIBITION BOOTHS HAD A VERY EASY FLOW-THROUGH'

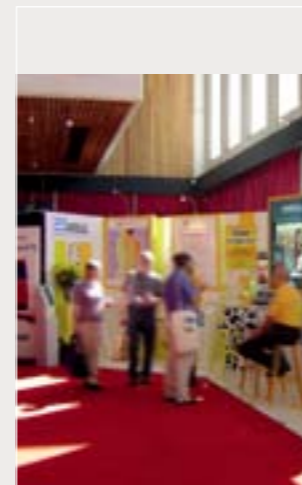
CONGRESS WEST



Auditorium



-0.08



Terrace Foyer



Wardle Room



Gallery Foyer