



Wondering where to stage your next event?

His Majesty's Theatre is a treasure-trove of famous theatrical memories and decorative opulence, which will set the scene for a wonderfully individual and exciting occasion – and be spoken about for months afterwards.

Since opening on Christmas Eve in 1904, His Majesty's Theatre has become one of Western Australia's most-loved heritage icons. Named after the reigning British monarch of 1904, King Edward VII, it is believed to be the only remaining working Edwardian Theatre in Australia and one of only two remaining 'His Majesty's' theatres in the world.

The grandeur of the theatre's auditorium is well complemented by the Edwardian-era architecture and fine theatre acoustics. Other features of the building include a grand white marble staircase, corporate cabaret room downstairs, an intimate VIP lounge area, the elaborate Dress Circle Bar and our equally impressive Barre Lounge Café on the ground floor.

From the moment you contact us, we will work with you to ensure every detail is covered – leaving you free to get the most out of your occasion.

**WE OFFER VENUES WITH A DIFFERENCE, MATCHED BY
A WEALTH OF EXPERIENCE AND SENSATIONAL CATERING**

OUR AWARD-WINNING CATERING AND FUNCTION PROFESSIONALS ARE COMMITTED TO PROVIDING EXCEPTIONAL FOOD AND QUALITY SERVICE ON EVERY OCCASION.

HIS MAJESTY'S THEATRE

Main Auditorium

His Majesty's Theatre's auditorium can seat up to 1200 delegates in a traditional horseshoe arrangement on three seating levels.

The auditorium has a spectacular, ornately-painted domed ceiling, plush seating, velvet house curtain and stunning surrounds with an atmosphere conducive to making the maximum impression.

Main Stage

Providing a unique and fascinating venue space, the main stage within the theatre's auditorium is frequently transformed to offer an amazing venue for black-tie dinners and private cocktail receptions.

Raise the house curtain and reveal a truly spectacular gala ballroom – chandeliers, special effects lighting, state of the art technology... nothing will top a celebration On Stage at The Maj!

Dress Circle Bar & Foyer

The décor of the entire Dress Circle Level is nothing short of extraordinary. Nowhere in Perth will you find such beautifully-maintained heritage rooms for your every corporate entertaining need.

Perfect for a wonderfully individual meeting space, cocktail reception, formal dinner or exclusive pre-show function. The entire level can also be utilised for conference luncheons, workshops or trade displays.

VIP Lounge

A small and intimate function room with lush décor and its very own personal bar, the VIP Lounge – well suited for pre-show corporate entertaining – will guarantee a lasting impression.

DownStairs at the Maj

A unique, upmarket function area, popular for both corporate and social gatherings, and offering a fresh alternative to the more traditional function room.

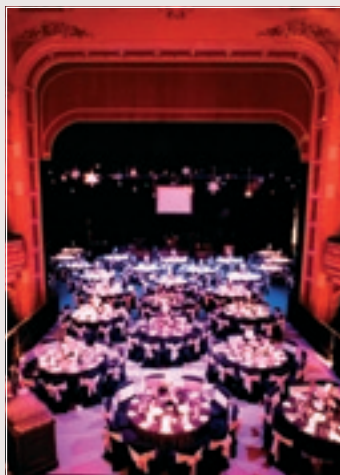
The primary use of this area is as our premier cabaret venue – Perth's newest corporate entertainment concept – promising an intimate evening of superb entertainment, sophisticated cuisine and an excellent selection of wines, spirits, beers and soft drinks.

This versatile area is also perfect for corporate sundowners, seminars, product launches and birthday parties.

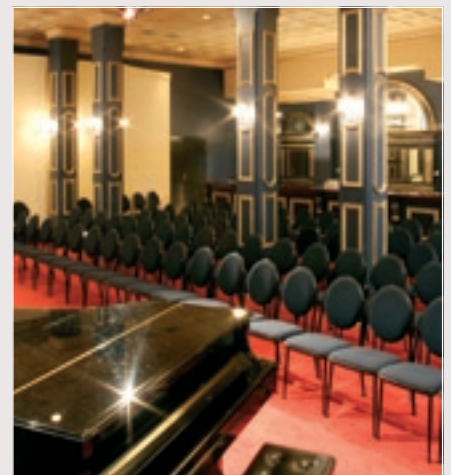
CONSIDER THIS MAGNIFICENT AUDITORIUM FOR A TRULY UNIQUE CONFERENCE OR AWARDS CEREMONY EXPERIENCE



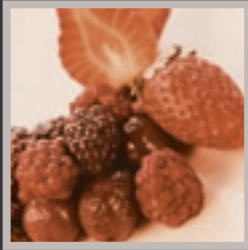
Auditorium



Main Stage - Extension B



Dress Circle Bar



HIS MAJESTY'S	DIMENSION (M)	AREA (M ²)	CEILING HEIGHT (M)	Theatre	Cocktail	Dinner	Exhibition	Boardroom
AUDITORIUM				1200	-	-	-	-
Main Stage	18 x 18	324	15.9	200	300	210	on request	-
Main Stage Extension A	9 x 3.6	32	19.2	-	30	20	on request	-
Main Stage Extension B	10.8 x 9.6	104	19.2	-	80	70	on request	-
DRESS CIRCLE LEVEL								
Dress Circle Bar	12 x 9.5	114	23.8	100	120	80	on request	20
Dress Circle Foyer	sectioned	167.4	3.8	60	130	40	on request	30
Exhibition Area	7.6 x 7.4	56	3.8	20	40	30	on request	16
VIP Lounge	10 x 4.5	36	3	-	20	10	-	10
GROUND LEVEL								
Main Stalls Foyer	sectioned	152	4.2	-	150	-	-	-
Barre Lounge Café	12.5 x 7.5	93.8	4.2	60	100	60	-	30
Café Anteroom	8.2 x 4.6	37.7	4.2	25	30	30	-	24
LOWER GROUND								
DownStairs at the Maj	18 x 9	162	3.1	90	150	80	-	24

NB Dinner & Cocktail capacities will reduce where a dance floor is required.
Area (M²) indicates useable floor space.

‘AS FOR THE STAGE SETTING, WELL IT TRULY WAS
A UNIQUE AND SPECTACULAR VENUE – IT TOOK
EVERYONE’S BREATH AWAY’

EPIC ENERGY

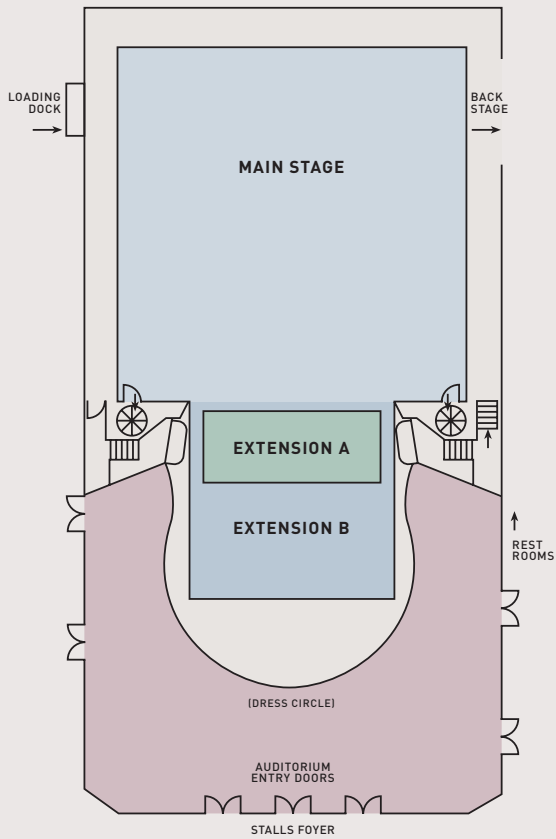


Dress Circle Foyer

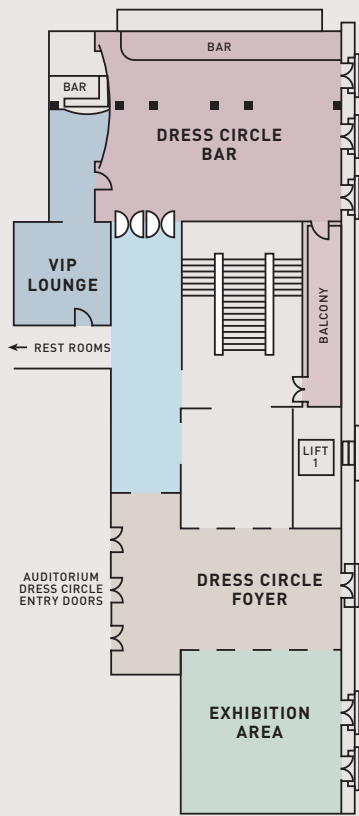
VIP Lounge

DownStairs at the Maj

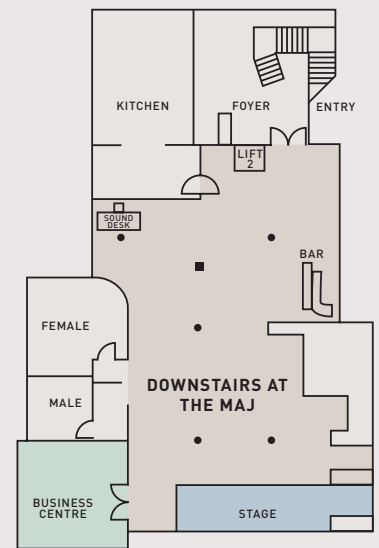
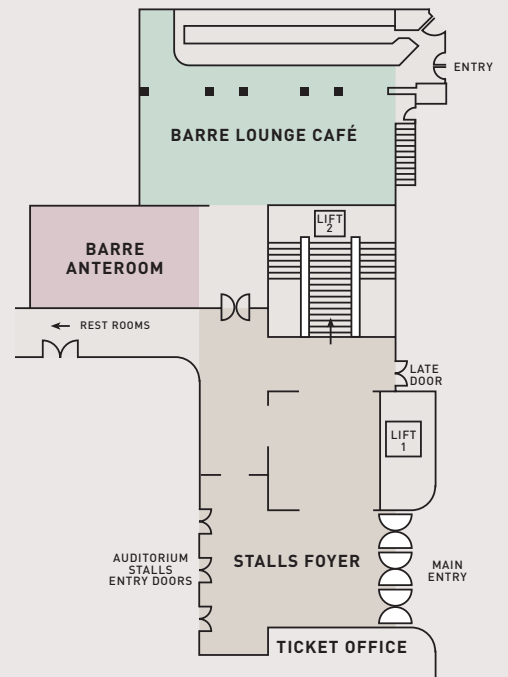
Main Stage & Auditorium Plan



Dress Circle Level Plan



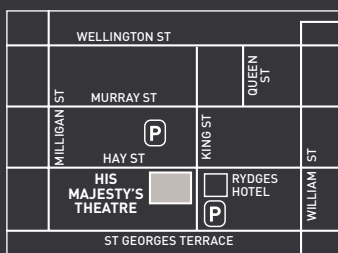
Ground Level Plan



Lower Ground Level Plan

The theatre is located directly adjacent to the Rydges Perth Hotel and is just a five-minute walk from the main Perth city bus route and railway station. Parking is situated directly opposite at His Majesty's Car Park (entry from Murray Street) and also Wilsons Parking on King Street – ACROD bays are available at both. Street parking is also available.

The theatre is equipped with wheelchair access and offers audio assistance for the hearing impaired.



His Majesty's Theatre

825 Hay Street Perth, Western Australia.

All correspondence: PO Box Y3056 East St Georges Tce, Perth WA 6832.

Function enquiries: T 08 9231 9941 F 08 9221 0775.

www.hismajestytheatre.com.au