



Originally built as the Subiaco City Hall in 1956, the building was converted into a performing arts venue and re-opened as the Subiaco Theatre Centre in 1984. In 2006 the building underwent a major \$1.7million refurbishment and was renamed Subiaco Arts Centre.

The centre features a diverse range of rooms for hire, and is surrounded by magnificent gardens offering ample sunny spots, but also plenty of shade from towering trees

The centre is home to Barking Gecko, Perth's leading theatre company for young people.

### **Main Auditorium**

The Main Auditorium is well known for its superb acoustics and corner stage, featuring raked seating for up to 305 delegates, offering unobstructed views from every seat.

### **The Studio**

The Studio is a very informal meeting place that has tiered seating and a cleared floor space of 30 square metres in the centre of the room. The seating can be removed which increases the floor space to 80.5 sqm. With glorious garden views, this room is often used for stand-up luncheons, tea breaks and casual seminars.

### **Bar Foyer**

Located on the first floor of the centre, the bar foyer is a fully licensed area primarily used for pre, interval and post-show refreshments. In conjunction with a conference, the Bar Foyer is used for tea breaks, luncheons, sundowners and small product displays. Picture hanging rails for posters and banners are an added bonus.

### **The Undercroft**

This unique venue area has floor-to-ceiling windows offering natural daylight. It is most often used for informal workshops, meetings, product lunches or sundowners.

### **Multipurpose Room**

This low cost venue area was built to suit the price conscious hirer. Suitable as a breakout space, catering area or conference hospitality room.

### **The Boardroom**

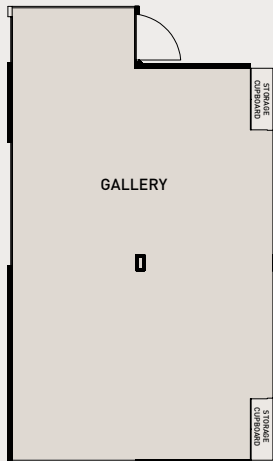
Perfect for the committee or speaker's preparation room at a conference or simply as a meeting room for a small group looking for a very private space.

### **The Gallery**

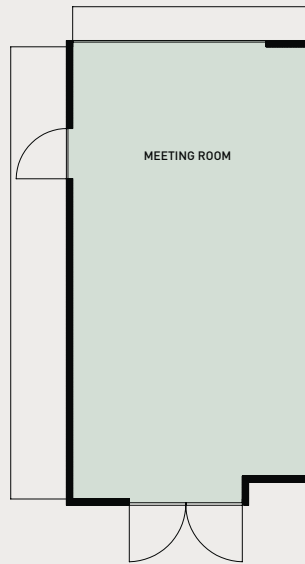
Versatile, light and bright. Dinners, cocktail parties, meetings or product launches - this room is the perfect space for almost anything!

**A TEAM OF HIGHLY TRAINED TECHNICIANS IS AVAILABLE TO ATTEND TO YOUR SPECIFIC TECHNICAL REQUIREMENTS.**

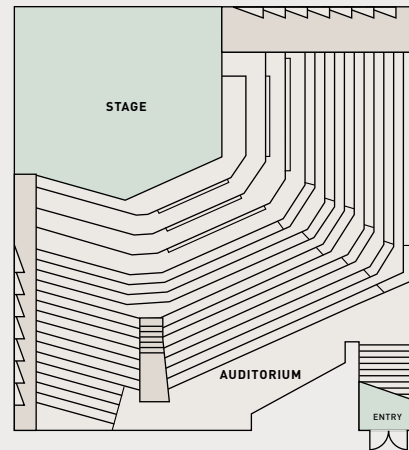
Gallery Plan



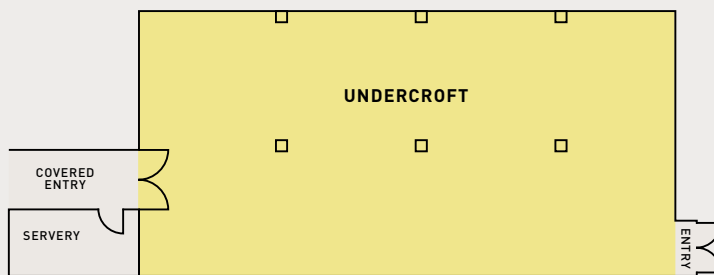
Meeting Room Plan



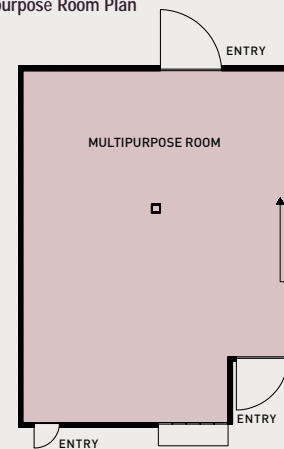
Main Stage & Auditorium Plan - First Floor



Undercroft Plan - Ground Floor

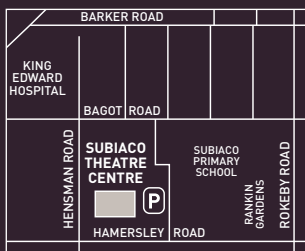


Multipurpose Room Plan



SUBIACO THEATRE CENTRE	DIMENSION (M)	AREA (M <sup>2</sup> )	CEILING HEIGHT (M)	Theatre	Cocktail	Dinner	Boardroom
Auditorium				305	-	-	-
Main Stage	9.2 x 7.2	72	4.8	-	70	50	-
The Studio	11.5 x 7	80.5	4.8	119	80	20	12
Bar Foyer	8 x 16	140	2.3	-	130	40	-
Bar Foyer Alcove	-	-	-	-	20	-	-
Theatre Gardens	N/A	N/A	N/A	500	-	-	-
Rehearsal Room	14 x 9	126	2.2	-	-	-	-
Gallery	9.5 x 14	133	2.3	130	150	80	40
Multipurpose	8.5 x 11	93.5	2.3	90	100	60	30
Undercroft	14 x 8.5	119	2.2	100	119	80	-
Meeting Room	4.6 x 4.2	20	2.3	-	-	16	12

NB Dinner & Cocktail capacities will reduce where a dance floor is required.  
Area (M<sup>2</sup>) indicates useable floor space.



The centre is situated 5kms west of Perth's CBD and 17kms west of the Domestic and International Airports. The city bus service stops right outside, and the Railway Station is a mere 15 minute walk. Parking for 124 cars is available in the Theatre Gardens car park. ACROD parking bays are also available.

The centre is equipped with wheelchair access to the Main Auditorium and The Studio via the lift on ground floor, with special allocated seating in the auditorium. We request prior notification of all attendees who have special needs.

**Subiaco Arts Centre**

180 Hamersley Road Subiaco, Western Australia 6008.  
Function enquiries: T 08 9231 9941 F 08 9221 0775.

[www.subiacoartscentre.com.au](http://www.subiacoartscentre.com.au)